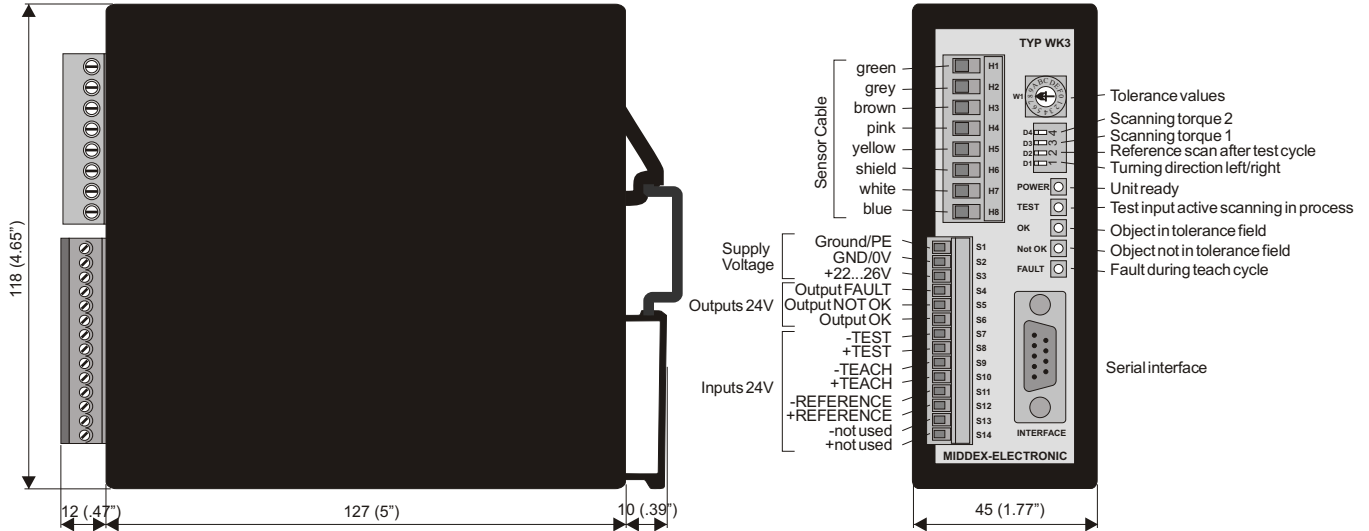


WK3 Technical Data



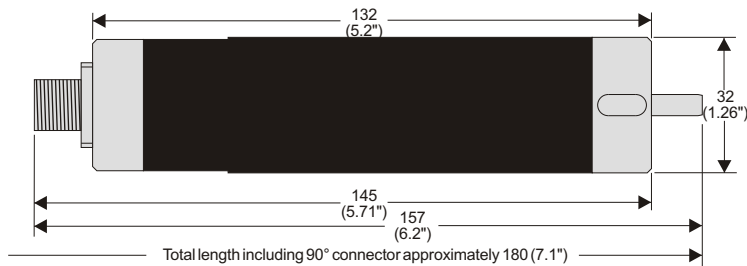
Caring Beyond Our Products

Controller WK3A or B (item #94500000, 94500010)



- Protection: IP20
- Interference susceptibility: to EMV specs, carries CE logo
- Mounting: EN rail (DIN rail 50 022)
- Supply voltage: 24VDC (20-26VDC)
- Power draw: typically 15W (no output loads)
- Outputs: solid state +24V
- Output current load: 100mA maximum, short protected, driving to 24V not to 0V
- Temperature range: 0° to +50°C (32° to 122°F)
- Signal voltage: 8 to 30VDC
- Signal input resistance: approximately 4kΩ
- Signal plug: Phoenix MC 1,5/14-ST-3,5 (18 40 48 9)
- Sensor plug: Phoenix MSTB 2,5/8-ST-5,08 (17 57 07 7)
- Housing: PC poly carbonate

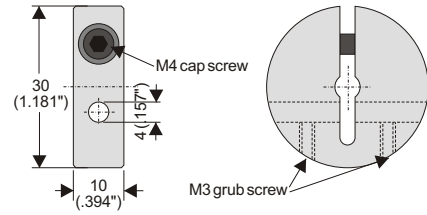
Sensor WKT3 (item #94510000)



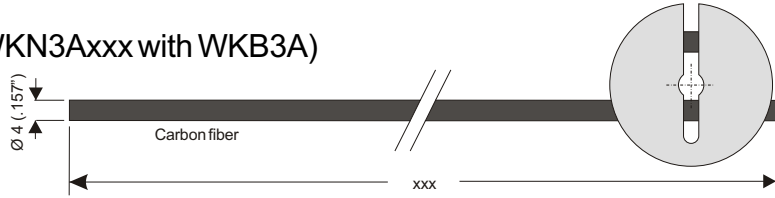
Scanning angle 30°	320 ms
Scanning angle 60°	430 ms
Scanning angle 90°	500 ms
Scanning angle 120°	540 ms
Scanning angle 150°	580 ms
Scanning angle 180°	630 ms
Scanning angle 210°	670 ms
Scanning angle 240°	710 ms
Scanning angle 270°	750 ms

- Sensor body: Aluminum
- Protection: IP68 (connector plug IP67)
- Probe length: standard 100mm (4"), 200mm (7.9"), 270mm (10.6")
- Scanning angle: 10° to 270°
- Scanning direction: clock wise, counter clock-wise
- Scanning: potential free
- Smallest tool diameter: approximately 0.3mm (.012")
- Temperature range: 0° to +70°C (32° to 158°F)

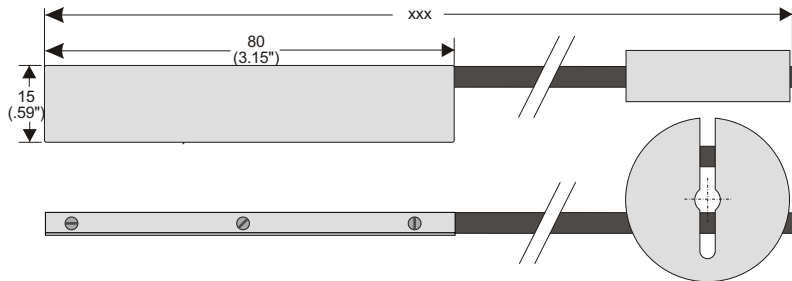
Probe holder WKB3A



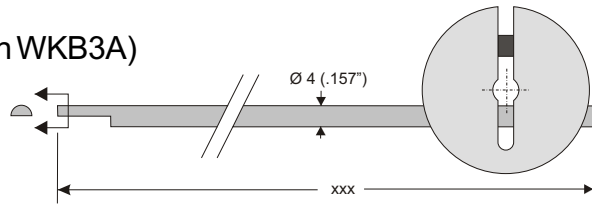
Probe assembly WKE3A.xxx (WKN3Axxx with WKB3A)



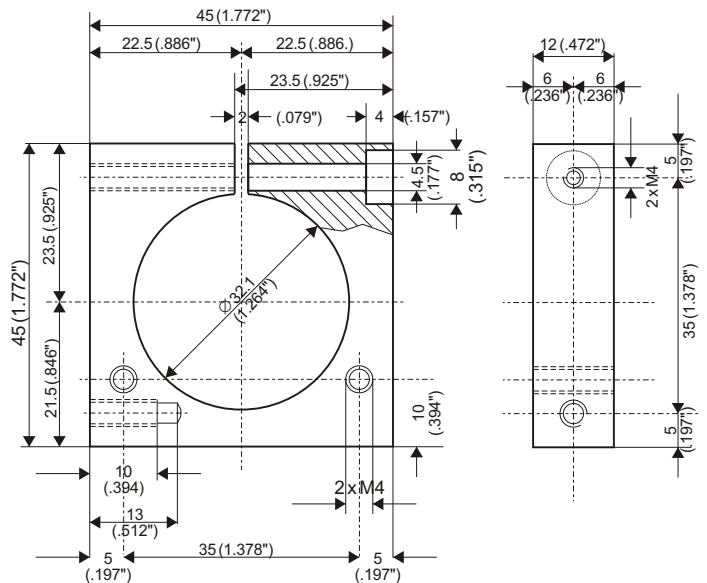
Probe assembly WKE3B.xxx (WKN3Bxxx with WKB3A)



Probe assembly WKE3C.xxx (WKN3Cxxx with WKB3A)



Mounting bracket WKK3A



All text, technical data, measurements and samples were prepared thoroughly. However Middex Electronic and CIRO Products Ltd. cannot be held liable for errors and omissions. Middex Electronic and CIRO Products Ltd. reserve the right to improve or change the design of hard and software and make changes to the technical documentation without further notice.