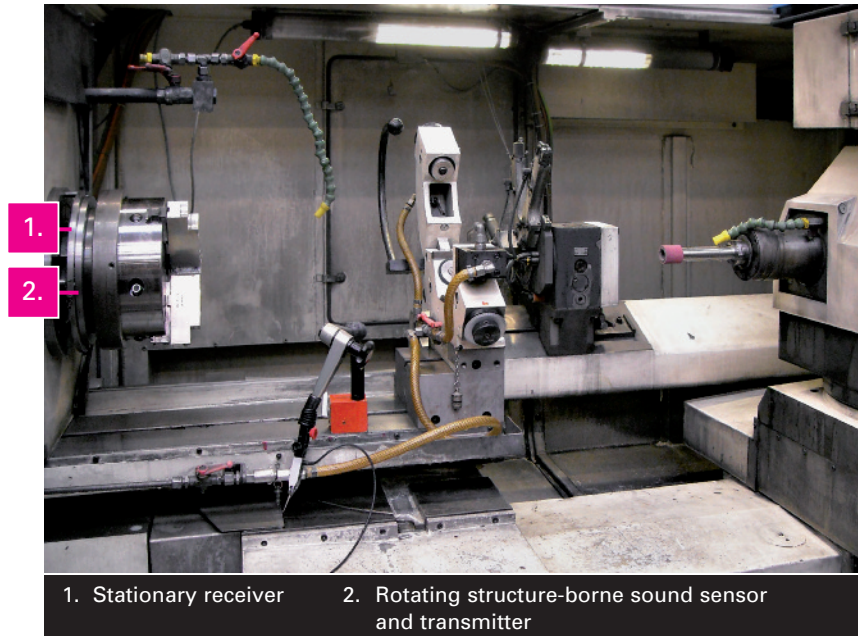


mechatronics – made in switzerland

First Cut Indication Control for the Voumard 300 CNC Internal Grinder (Structure-borne Sound Control, Gap Control, «Autotast», Acoustic Emission)



1. Stationary receiver 2. Rotating structure-borne sound sensor and transmitter



3. ebg1500 structure-borne sound controller with display from Elaso

Elaso adapted the ebg1500 structure-borne sound control system for refitting existing Voumard 300 CNC internal grinding machines. The unit is installed at a well known grinding company and is used extensively. Adding the structure-borne sound system does not involve any change in machine controls or software and is therefore very convenient for the after market fitting. Installation is straight forward and can be accomplished within a day. Advantages using the ebg1500:

- The ebg1500 features a very high sensitivity (important for long parts and light cuts).
- Optimal sound signal adaptation with the time saving automatic back-ground noise adjustment (pressing a key).
- From the machine controller independent, the ebg1500 controller displays the structure-borne sound signal, allowing therefore to monitor visually the entire grinding process including spark-out.

- The structure-borne sound sensor is attached with only four screws to the rotating work head. The sound coming from the grinding wheel is transmitted through an air gap to the stationary receiver.
- The ebg1500 structure-borne sound system expands the «Autotast» built into the frequency converter.
- The sensitivity is set with the «Autotast» parameters and, without any further efforts, is therefore directly usable in the grinding programs.

Further information in regard to structure-borne sound processing and its benefits are available on our web page: www.elaso.ch.

Your interest is welcome and questions will be answered by Silvan Jeker (e-mail: silvan.jeker@elaso.ch, phone: +41 32 685 01 67).